

## Leopard DI650i T3 SURFACE DRILLS

### TECHNICAL SPECIFICATION

Leopard DI650i is a diesel powered, self-contained crawler mounted intelligent down-the-hole drill rig designed for demanding high-capacity production drilling applications in surface mining, as well as large-scale quarry applications. The drill is equipped with an operator's cabin, fixed boom, dry dust collector, drill pipe changer and incorporates a state-of-art design and layout.

#### KEY FEATURES

Hole diameter:	115 - 203 mm (4½" – 8")
Drill pipes:	89, 102, 114, 127 and 140mm* (3½", 4", 4½", 5" and 5 ½"*)
DTH-Hammer	4", 5", 6" (optimum size)
Engine output:	403 kW/1800 rpm (Tier 3)
Air delivery	28,3 m³/min (1000cfm) working pressure up to 30 bar (435 psi)
Production capacity:	2,1 Mt/a, one shift operation
Total weight :	25,100 kg (55,336 lb) dry weigh

\*with MRH6 option



## STANDARD COMPONENTS

Rotary head HTRH6
Chain feed
Pipe changer, carousel type
Fixed boom
Cabin iCAB
Carrier, track mounted
Powerpack, diesel driven, hydraulic pumps and onboard compressor
Dust collector X-200
Hydraulic system, load sensing
Control system, PLC controlled proportional electro- hydraulics
Working lights, 9 pcs
Service lights in engine compartment, 5pcs
1 Set Manuals, paper copy
1 Set Manuals, USB memory

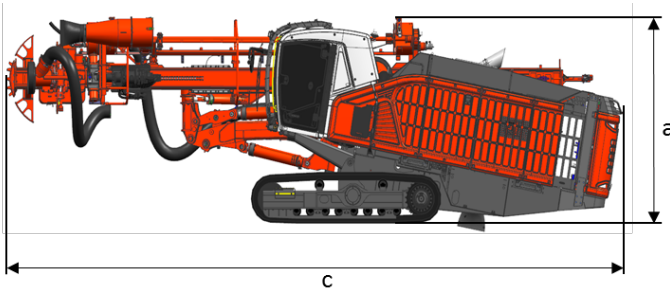
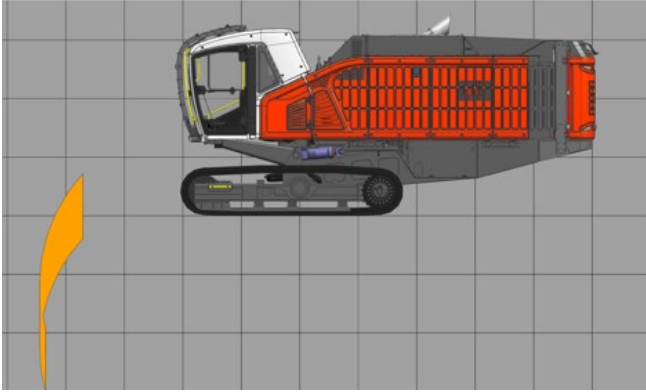
## THE JAWS FOR DRILL STEELS

DRILL STEEL TYPE	DRILL STEEL DIAMETER	RECOMMENDED HOLE DIAMETER
Pipes	89 mm	115 - 127 mm 4½" - 5"
Pipes	102/114 mm	140 - 172 mm 5 ½" - 6 ¾"
Pipes	127/140 mm	152-203 mm 6" - 8"

## SELECTION OF OPTIONS

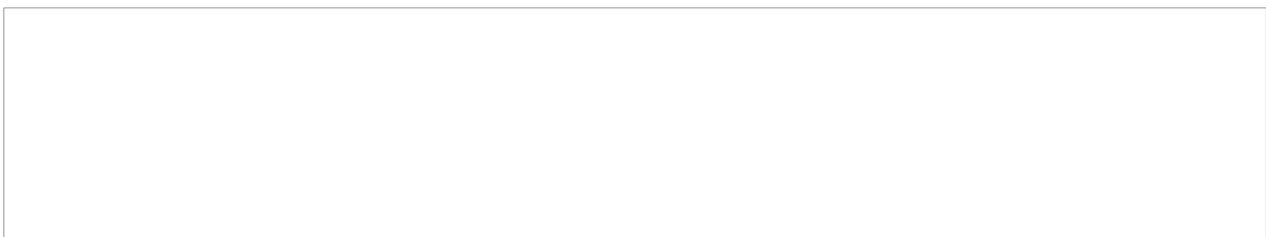
Alternative seat with 3-point seat belt and air cushioning
H13 Cabin filter, HEPA
Cooler bag in cabin
Radio CD/MP3 Bluetooth, Handsfree, DAB
Radio with CD-MP3 player
Reversing camera
Roller blinds for cabin windows
Explosion proof cabin window
Heated mirrors
Emergency glass breaker hammer (additional outside of the cabin)
Kit for alternative pipes, each
Service winch (requires remote control-, or full-radio option)
Thread greasing
Full cycle one hole automatic drilling
Compressor flow control system
MRH6 HD Rotation head, up to 203mm hole size and 140mm drill pipes
Central lubrication system Lincoln
Central lubrication system Sandvik
Electric fuel filling pump
Electric hydraulic oil filling pump
Fast fill connection for engine coolant, hydraulic and engine
Fast fill connection for fuel Wiggins
Fluid service fill safety lock out
Fire suppression system Sandvik Eclipse, automatic
Fire suppression Ansul (hybrid), automatic
Guides for grousers
Hydraulic rear ground support
Pressure washer (requires water injection option)
Radio remote control for service winch
Full-radio remote for tramming, drilling and service winch
Led lights, 9 pcs
Led lights 15 pcs.
Disengagement clutch for compressor, manual
Extra heat protection for exhaust gas muffler
Fuel powered engine heater, extra large
Jump start device (high current el. socket)
Dustmizer (requires water injection)
Dust collector noise silencer
Water injection system
Extra manuals, price will be added according to pricing sheet
Drill bit opening device for 4 1/2" - 5 1/8" drill bits
Drill bit opening device for 6" - 8" drill bits
TIMi for inclined holes and hole depth measurement
GPS aiming device for TIMi inclined holes
Automatic feed alignment for TIMi
TIMi for inclined holes with TIM3D readiness (Leica/Trimble)
Feed to tramming support assist (requires TIM3D-readiness or TIM3D)
TIM3D drill navigation system (Leica / Trimble)
Automatic feed alignment and positioning for TIM3D
Driller's Office planning software (one-year license)
SanRemo Gold fleet data transfer (Quake 2G/3G GSM / SAT Modem)
SanRemo Premium wireless data transfer for TIM3D (Quake 2G / 3G)
Extended warranty service up to 36 months / 5000 engine hours
Extended warranty service up to 48 months / 7000 engine hours

COVERAGE AREA AND DIMENSIONS



DIMENSIONS

Weight	25,100 kg (55,336 lbs) dry weight
Width	3.00 m (9.8 ft)
Height	a, 3.5/4.2 m (11.5/13.8 ft), transportation/on site operation
Total length	c, 12.4 m (40.7 ft)



Sandvik Mining and Rock Technology reserves the right to make changes to the information on this data sheet without prior notification to users. Please contact a Sandvik representative for clarification on specifications and options.

ROCKTECHNOLOGY.SANDVIK